

ZB-F Series Melt pump for reaction kettle

Introduction of Melt pump for reaction kettle

ZB-F series Melt pump for reaction kettle is mainly used for transporting medium or high viscosity medium out of the vacuum reaction kettle. On basis of large suction inlet flange design, the high viscosity medium is able to absorb inside under vacuum conditions. This series of reaction kettle pump is primarily applicable for ABS, PS, PET, PC, SAN, PP, PE Biopolymers etc.



Technical Parameter of Reaction kettle pump

- ◆ Melt Pump Body: stainless steel, carbon steel, hastelloy, monel
- ◆ Gear: tool steel, nitrided steel, special material and wear-resistant coating
- ◆ Tooth profile: Straight tooth, Helical tooth, Herringbone tooth
- ◆ Sliding Bearing: tool steel, Ti-Ta alloy, silver-nickel, special material and wear-resistant coating
- ◆ Shaft Sealing: mechanical seal, Screw sealing+Packing seal, flushing fluid combined sealing
- ◆ Heating System: Conduction oil heating, Biphenyl gas

Operating Parameter of Melt pump for reaction kettle

- ◆ Theory: Positive Displacement Gear Pump
- ◆ Structure: Gear Pump
- ◆ Usage: Plastic, Rubber Pump and Fiber
- ◆ Power: Electric or Oil
- ◆ Fuel: No Need

Main Product: [melt pumps](#), gear pumps, metering pump; [loss-in-weight feeders](#), weight feeder, liquid feeder, gravimetric feeder, volumetric feeders; [screen changer](#), polymer filter, melt filtration equipment.

- ◆ Pressure: High Pressure
- ◆ Volume Range: 0.5CC - 12000CC
- ◆ Viscosity: ≤ 40000 Pas
- ◆ Working Temperature: $\leq 400^{\circ}$ C(750° F)
- ◆ Cleaning Temperature: $\leq 450^{\circ}$ C(850° F)
- ◆ Inlet Pressure: Vacuum--1.5MPa
- ◆ Outlet Pressure: 40Mpa

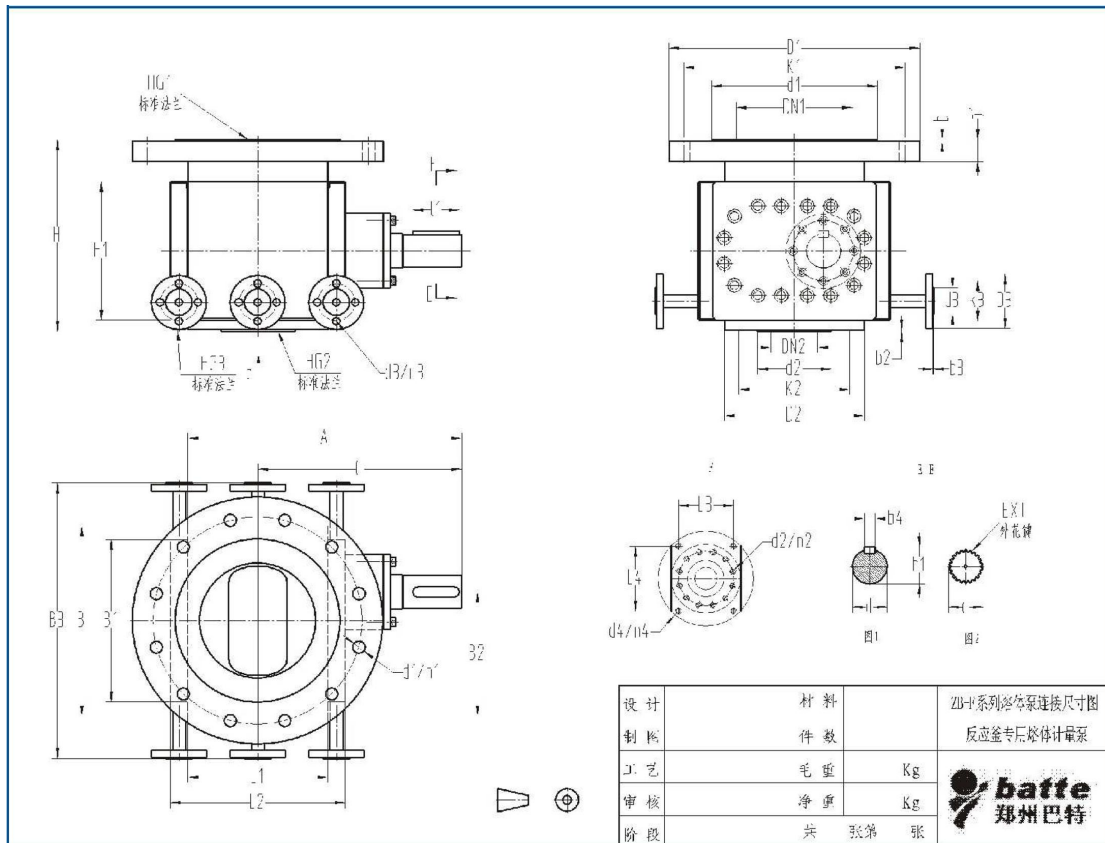
Features of Reaction kettle pump

- ◆ Stabilizing outlet pressure;
- ◆ Improving the products quality;
- ◆ Increasing the extrusion output;
- ◆ Reducing unit energy consumption;
- ◆ Prolonging the service time of extruder.

Application of Reaction kettle pumps

- ◆ Polymer extrusion molding, such as granulation, film, pipe, plate, sheet, etc;
- ◆ High-viscosity materials such as ABS, PS, PET, PC, SAN, PP, PE Biopolymers etc;
- ◆ Rubber, asphalt, paint, adhesives, coatings, lubricants, polyalcohol, non-particulate impurities;
- ◆ Polyester for cotton-fiber, polypropylene and other chemical fiber melt.

Structure of Melt pumps for reaction kettle



Parameters of Reaction kettle melt pump

Type	CC/Rev	Capacity (L/H)	Heating power (kw)	Dirven system (kw)	Pressure	Temperature
ZB-0.2	0.2	0.2-0.6	0.5	0.37	Inlet pressure: ≥0Mpa Exit pressure: ≤35Mpa	Operating temperature: ≤350℃ Clearing temperature: ≤450℃
ZB-1	1	1-3	1	0.5		
ZB-2	2	2-6	1	0.75		
ZB-5	5	5-15	1	1.1		
ZB-10	10	10-30	1	1.5		
ZB-20	20	20-60	2	2.2		
ZB-31.5	31.5	30-90	2	3		
ZB-50	50	50-150	2	4		
ZB-100	100	100-300	3	5.5		
ZB-150	150	150-450	4	7.5		
ZB-200	200	200-600	4	11		
ZB-250	250	250-750	5	15		
ZB-315	315	300-900	6	18.5		
ZB-400	400	400-1200	8	22		
ZB-500	500	500-1500	10	30		
ZB-630	630	600-1800	12	37		
ZB-800	800	800-2400	15	45		
ZB-1000	1000	1000-3000	18	55		
ZB-1500	1500	1200-4500	20	75		

The other Products



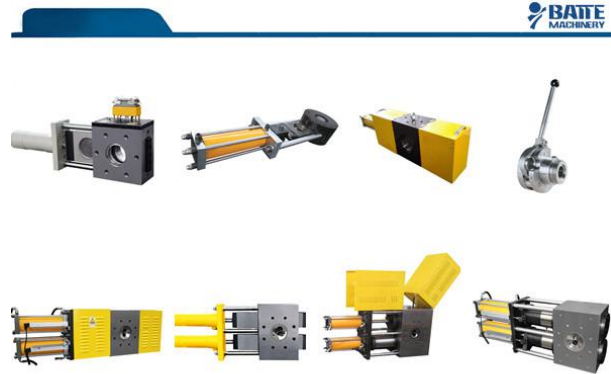
- [ZB-B Gear melt pump](#)
- [ZB-C Extruder melt pump](#)
- [ZB-D Extruding pump for polymer](#)
- [ZB-E Pressurized melt pump](#)
- [ZB-F Melt pump for reaction kettle](#)
- [ZB-H High temperature and high pressure melt pump](#)
- [ZB-K Polymer melt pump](#)
- [ZB-R Gear pump for rubber extruder](#)
- [ZB-U Spinning gear metering pump](#)
- [ZB-X Chemical transporting and dosing pump](#)

Skype: [Battemachinery](https://www.batte.com)

info@battemachinery.com
sale@melt pump.com

Main Product: [melt pumps](#), gear pumps, metering pump; [loss-in-weight feeders](#), weight feeder, liquid feeder, gravimetric feeder, volumetric feeders; [screen changer](#), polymer filter, melt filtration equipment.

- [Double plate hydraulic screen changer](#)
- [Manual control screen changer](#)
- [Double piston four screen cavities screen changer](#)
- [Automatic mesh belt continuous screen changer](#)
- [Single piston screen changer](#)
- [Single plate screen changer](#)
- [Double piston double screen cavities screen changer](#)
- [Four screen cavities backflash screen changer](#)



Skype: Battemachinery

info@battemachinery.com
sale@meltump.com



Skype: Battemachinery

info@battemachinery.com
sale@meltump.com

- [Single screw gravimetric dosing feeder](#)
- [Single screw gravimetric feeder](#)
- [Twin screw loss in weight metering feeder](#)
- [Twin screw loss in weight feeder](#)
- [Volume feeding machine \(single screw,twin screw\)](#)
- [Micro loss in weight metering feeder](#)
- [Micro loss in weight feeder](#)
- [Liquid loss in weight feeder](#)
- [Multi-component loss in weight feeder](#)