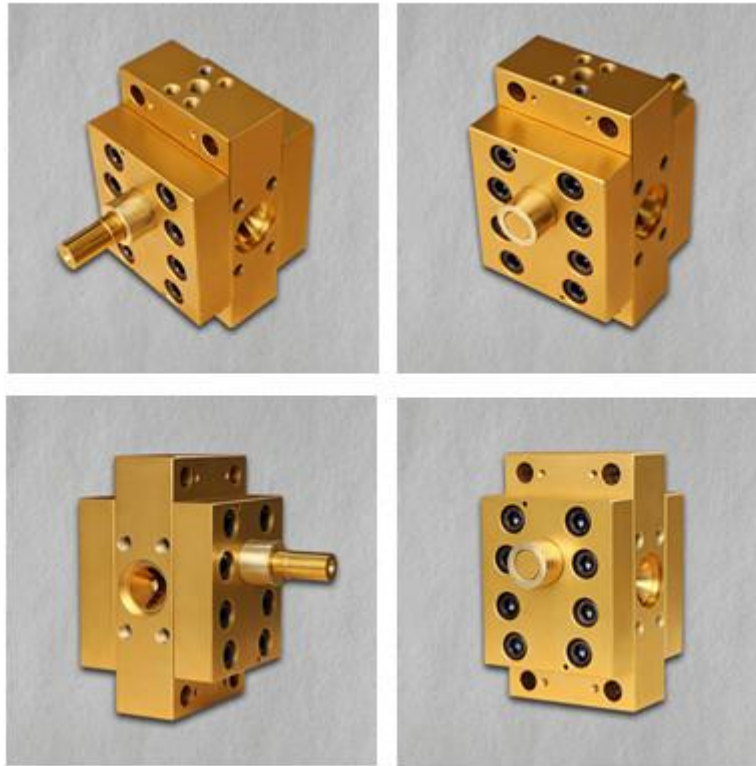


## **ZB-H Series High temperature and high pressure melt pump**

### **Introduction of High temperature melt pump**

- ◆ High temperature melt pump is used for transportation, pressurization or the metering of the high temperature and high viscosity polymer melt. This melt pump is applicable for engineering plastic or blown film technique.
- ◆ High pressure melt pump have a unique positive displacement design which provides consistent, accurate polymer delivery under varying extruder output conditions of pressure, temperature and viscosity. With melt pump providing the pressure between the extruder and the die, extruder parameters can be configured to provide a homogeneous melt at increased throughput and tighter gauge tolerances.



### **Technical Parameter of High temperature melt pump**

- ◆ Melt Pump Body: CPM stainless steel, Ti-Ta alloy
- ◆ Gear: CPM stainless steel, Ti-Ta alloy, special material and wear-resistant coating
- ◆ Sliding Bearing: CPM stainless steel, Ti-Ta alloy, special material and wear-resistant coating
- ◆ Shaft Sealing: Screw sealing
- ◆ Heating System: Electrical heating

### **Operating Parameter of High pressure melt pump**

- ◆ Theory: Positive Displacement Gear Pump
- ◆ Structure: Gear Pump
- ◆ Usage: Plastic, Rubber Pump and Fiber

**Main Product:** [melt pumps](#), gear pumps, metering pump; [loss-in-weight feeders](#), weight feeder, liquid feeder, gravimetric feeder, volumetric feeders; [screen changer](#), polymer filter, melt filtration equipment.

- ◆ Power: Electric
- ◆ Volume Range: 5CC - 3200CC
- ◆ Viscosity:  $\leq 20000$  Pas
- ◆ Working Temperature:  $\leq 510^{\circ}$  C( $950^{\circ}$  F)
- ◆ Cleaning Temperature:  $\leq 590^{\circ}$  C( $1100^{\circ}$  F)
- ◆ Outlet Pressure:  $\leq 70$ Mpa
- ◆ Differential Pressure:  $\leq 50$ Mpa

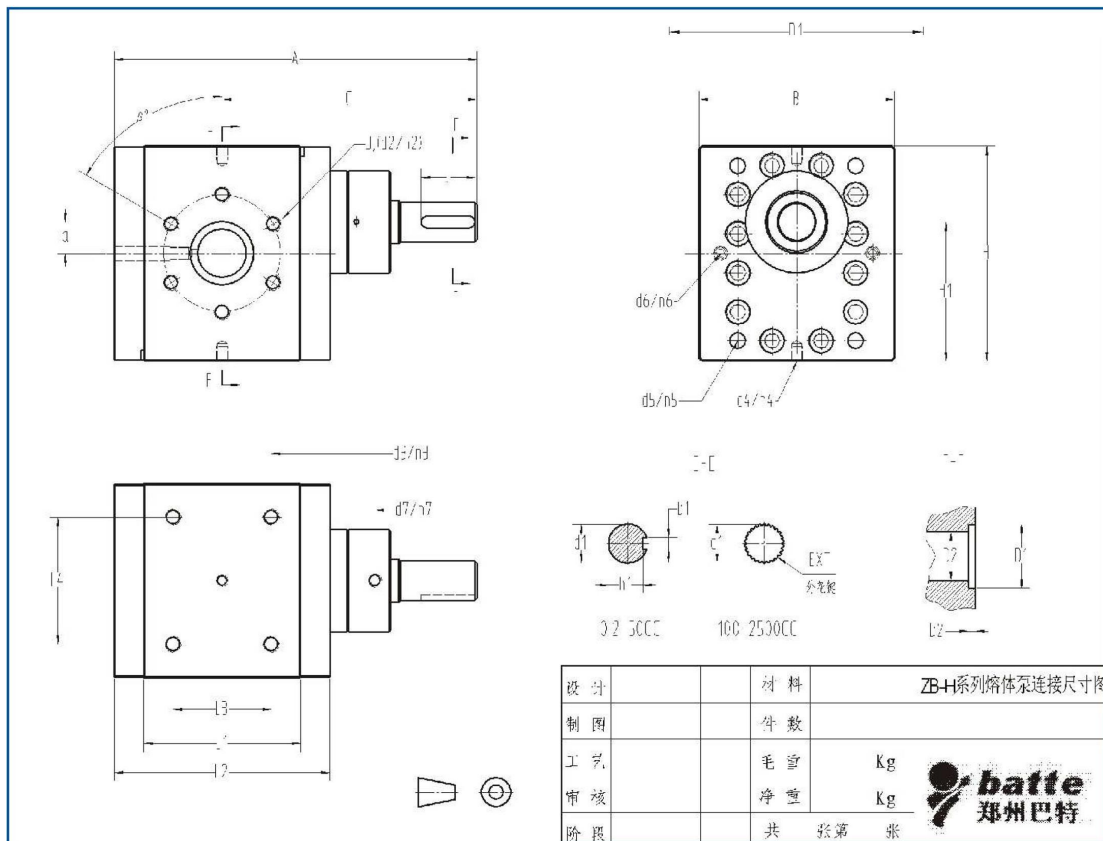
**Features of High pressure gear pump**

- ◆ Stabilizing outlet pressure;
- ◆ Improving the products quality;
- ◆ Increasing the extrusion output;
- ◆ Reducing unit energy consumption;
- ◆ Prolonging the service time of extruder.

**Application of High temperature gear pump**

- ◆ Polymer extrusion molding, such as granulation, film, pipe, plate, sheet, etc;
- ◆ High-viscosity materials:PC, PMMA, ABS, HIPS, PET, PVB, PS, PP, PA, PE, PVA .etc;
- ◆ Rubber, asphalt, paint, adhesives, coatings, lubricants, polyalcohol, non-particulate impurities;
- ◆ Polyester for cotton-fiber, polypropylene and other chemical fiber melt.

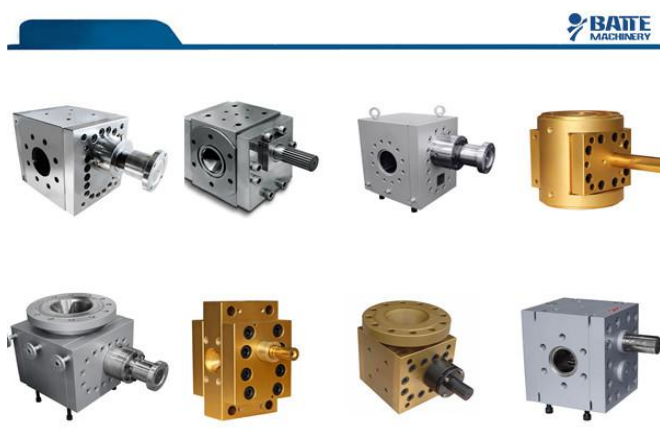
**Structure of High pressure pumps**



### Parameters of High temperature pumps

Type	CC/Rev	Capacity (L/H)	Heating power (kw)	Dirven system (kw)	Pressure	Temperature
ZB-0.2	0.2	0.2-0.6	0.5	0.37	Inlet pressure: ≥0Mpa Exit pressure: ≤35Mpa	Operating temperature: ≤350℃ Clearing temperature: ≤450℃
ZB-1	1	1-3	1	0.5		
ZB-2	2	2-6	1	0.75		
ZB-5	5	5-15	1	1.1		
ZB-10	10	10-30	1	1.5		
ZB-20	20	20-60	2	2.2		
ZB-31.5	31.5	30-90	2	3		
ZB-50	50	50-150	2	4		
ZB-100	100	100-300	3	5.5		
ZB-150	150	150-450	4	7.5		
ZB-200	200	200-600	4	11		
ZB-250	250	250-750	5	15		
ZB-315	315	300-900	6	18.5		
ZB-400	400	400-1200	8	22		
ZB-500	500	500-1500	10	30		
ZB-630	630	600-1800	12	37		
ZB-800	800	800-2400	15	45		
ZB-1000	1000	1000-3000	18	55		
ZB-1500	1500	1200-4500	20	75		

## The other Products



- [ZB-B Gear melt pump](#)
- [ZB-C Extruder melt pump](#)
- [ZB-D Extruding pump for polymer](#)
- [ZB-E Pressurized melt pump](#)
- [ZB-F Melt pump for reaction kettle](#)
- [ZB-H High temperature and high pressure melt pump](#)
- [ZB-K Polymer melt pump](#)
- [ZB-R Gear pump for rubber extruder](#)
- [ZB-U Spinning gear metering pump](#)
- [ZB-X Chemical transporting and dosing pump](#)

Skype: [Battemachinery](https://www.battemachinery.com)

[info@battemachinery.com](mailto:info@battemachinery.com)  
[sale@melt pump.com](mailto:sale@melt pump.com)

Main Product: [melt pumps](#), gear pumps, metering pump; [loss-in-weight feeders](#), weight feeder, liquid feeder, gravimetric feeder, volumetric feeders; [screen changer](#), polymer filter, melt filtration equipment.

[Double plate hydraulic screen changer](#)

[Manual control screen changer](#)

[Double piston four screen cavities screen changer](#)

[Automatic mesh belt continuous screen changer](#)

[Single piston screen changer](#)

[Single plate screen changer](#)

[Double piston double screen cavities screen changer](#)

[Four screen cavities backflash screen changer](#)



Skype: Battemachinery

[info@battemachinery.com](mailto:info@battemachinery.com)  
[sale@meltump.com](mailto:sale@meltump.com)



Skype: Battemachinery

[info@battemachinery.com](mailto:info@battemachinery.com)  
[sale@meltump.com](mailto:sale@meltump.com)

[Single screw gravimetric dosing feeder](#)

[Single screw gravimetric feeder](#)

[Twin screw loss in weight metering feeder](#)

[Twin screw loss in weight feeder](#)

[Volume feeding machine \(single screw,twin screw\)](#)

[Micro loss in weight metering feeder](#)

[Micro loss in weight feeder](#)

[Liquid loss in weight feeder](#)

[Multi-component loss in weight feeder](#)